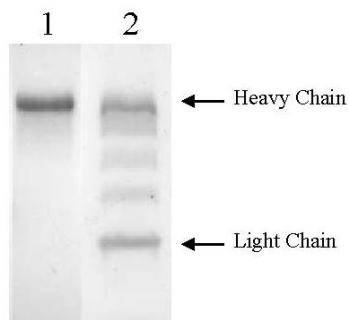


December 13, 2006

Molecular Innovations, Inc.

21315 Hilltop Street
Southfield, MI 48036
TEL: (248) 353-4927
FAX: (248) 353-4929
Web Site: <http://www.mol-innov.com>

Certificate of Analysis



Rabbit Plasmin - 10 % SDS PAGE
1 Plasmin (Non Reduced)
2 Plasmin (Reduced)

Product: Rabbit Plasmin– RbPLM

Date: 17 December, 2002

Lot: RbPLM-1202

Molecular Weight: 85,000 by SDS PAGE

Physical Specifications:

Physical Appearance: colorless frozen solution

Spectrophotometric Data:

Ultraviolet: Absorbance (280nm) = 0.48 $\epsilon^{0.1\%} = 1.69$
Concentration = 0.28 mg/mL

Considerations:

Storage Conditions: Store frozen at -70°C – stability > 1yr
Buffer Composition: 0.1M HEPES; 0.1M NaCl; pH 7.4

Other: Plasmin will undergo rapid autoproteolysis in the absence of Protease inhibitors such as benzamidine, and should be used quickly after thawing before significant activity losses occur.

Duane E. Day

Duane E. Day