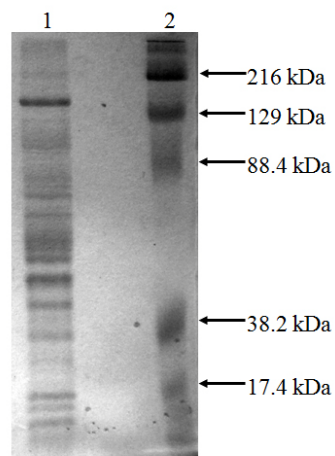


## Molecular Innovations, Inc.

46430 Peary Court  
Novi, MI 48377  
TEL: (248) 896-0142  
FAX: (248) 896-0148  
<http://www.mol-innov.com>

# Certificate of Analysis



10% SDS-PAGE  
1 Rat Liver Tissue Lysate (RT-TL-LR-411, 10 ug R)  
2 Prestained Standard (BIO-RAD Cat. No. 161-0324)

**Product:** Rat Liver Tissue Lysate – RT-TL-LR

**Date:** April 28, 2011

**Lot:** RT-TL-LR-411

### Physical Specifications:

Physical Appearance: red frozen solution

### Sample Data:

Concentration = 8.29 mg/mL determined by BCA

Storage Conditions: Store frozen at -70°C  
Buffer Composition: 0.1M Tris-HCl; 0.15M NaCl;  
0.1% SDS; 0.5% Na Deoxycholate;  
1% Triton X-100; pH 7.4

### Considerations:

A freshly-harvested Sprague Dawley rat brain is flash-frozen in liquid nitrogen within 30 seconds of removal and stored frozen until lysis. The tissue is ground and thoroughly homogenized at 4°C with a freshly prepared modified Radio Immuno Precipitation Assay (RIPA) buffer containing strong protease and phosphatase inhibitor cocktails. The final homogenate is incubated with DNase then clarified by centrifugation at 10,000 g at 4°C and stored at -80°C. Each lot is quality controlled by determining the protein concentration using a BCA assay and analyzed with SDS-PAGE using Coomassie blue for visualization. Sharp, clear protein bands indicate a quality protein lysate.

*Duane E. Day*

Duane E. Day