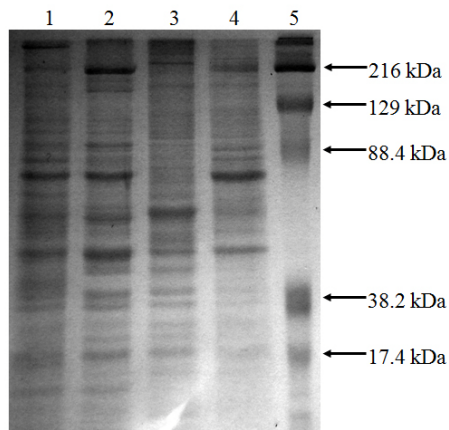


Molecular Innovations, Inc.

46430 Peary Court
Novi, MI 48377
TEL: (248) 896-0142
FAX: (248) 896-0148
<http://www.mol-innov.com>

Certificate of Analysis



10% SDS-PAGE
1 Rat Kidney Tissue Lysate (RT-TL-KD-411, 10 ug R)
2 Rat Heart Tissue Lysate (RT-TL-HT-411, 10 ug R)
3 Rat Brain Tissue Lysate (RT-TL-BR-411, 10 ug R)
4 Rat Lung Tissue Lysate (RT-TL-LG-411, 10 ug R)
5 Prestained Standard (BIO-RAD Cat. No. 161-0324)

Product: Rat Kidney Tissue Lysate – RT-TL-KD

Date: April 28, 2011

Lot: RT-TL-KD-411

Physical Specifications:

Physical Appearance: red frozen solution

Sample Data:

Concentration = 2.97 mg/mL determined by BCA

Storage Conditions: Store frozen at -70°C
Buffer Composition: 0.1M Tris-HCl; 0.15M NaCl;
0.1% SDS; 0.5% Na Deoxycholate;
1% Triton X-100; pH 7.4

Considerations:

A freshly-harvested Sprague Dawley rat brain is flash-frozen in liquid nitrogen within 30 seconds of removal and stored frozen until lysis. The tissue is ground and thoroughly homogenized at 4°C with a freshly prepared modified Radio Immuno Precipitation Assay (RIPA) buffer containing strong protease and phosphatase inhibitor cocktails. The final homogenate is incubated with DNase then clarified by centrifugation at 10,000 g at 4°C and stored at -80°C. Each lot is quality controlled by determining the protein concentration using a BCA assay and analyzed with SDS-PAGE using Coomassie blue for visualization. Sharp, clear protein bands indicate a quality protein lysate.

Duane E. Day

Duane E. Day