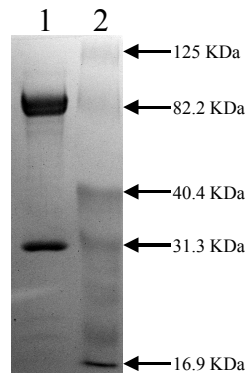


## Molecular Innovations, Inc.

21315 Hilltop Street  
Southfield, MI 48036  
TEL: (248) 353-4927  
FAX: (248) 353-4929  
Web Site: <http://www.mol-innov.com>

# Certificate of Analysis



10% SDS-PAGE - GelCode Blue Stain  
1 HPLM-106C (3 ug) Reduced  
2 Prestained Standard

**Product:** Human Lys Plasmin – HPLM

**Date:** January, 2006

**Lot:** HPLM-106C

**Molecular Weight:** 85,000 by SDS PAGE

### Physical Specifications:

Physical Appearance: colorless frozen solution

Solubility: > 2 mg/mL and < 5 mg/mL

### Spectrophotometric Data:

Ultraviolet: Absorbance (280nm) = 5.75  $\epsilon^{0.1\%}$  = 1.69  
Active Concentration = 3.4 mg/mL

### Activity:

100% by definition (eluted from SBTI)

### Considerations:

Storage Conditions: Store frozen at -70°C – stability > 1yr

Buffer Composition: 0.1 M HEPES; 0.1 M NaCl; pH 7.4

Other: The sample was eluted from SBTI agarose with 0.5 M benzamidine.

The sample is by definition 100% active because only functionally active plasmin can be bound to SBTI agarose. Benzamidine was removed by gel filtration using G-25 and the sample was flash-frozen immediately. The plasmin will undergo rapid auto proteolysis in the absence of benzamidine and should be used quickly once thawed. Aliquot to avoid freeze-thaw cycles.

*Duane E. Day*

Duane E. Day