

## Molecular Innovations, Inc.

46430 Peary Ct.

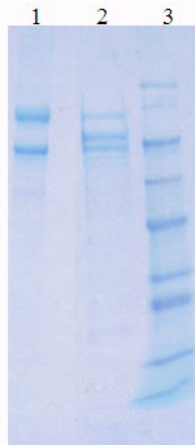
Novi, MI 48377

TEL: (248) 896-0142

FAX: (248) 896-0148

Web Site: <http://www.mol-innov.com>

# Certificate of Analysis



1. GP2B3A-580 (6 ug) NR
2. GP2B3A-580 (6 ug) R
3. Molecular Weight Markers

**Product:** Human GPIIb/IIIa - GP2B3A

**Date:** July, 2011

**Lot:** GP2B3A-580

**Molecular Weight:** Mixed

### Physical Specifications:

Physical Appearance: colorless liquid solution

### Spectrophotometric Data:

Concentration = 1.52 mg/mL

Protein concentration is determined via the Bradford method.

### Considerations:

Glycoprotein IIb consists of 2 disulfide-linked subunits GPIIb (MW = 125,000) and GPII (MW = 23,000) while GPIIIa has only one polypeptide chain (MW = 108,000). GPIIb/IIIa migrates on gels as follows: GPIIb 136,000 non-reduced and 125,000 reduced. GPIIIa is 97,000 non-reduced and 108,000 reduced.

Storage Conditions: Store frozen at -20°C

Buffer Composition: 0.02M Tris-HCl; 0.1M NaCl; 0.1% Triton X-100;  
0.001M CaCl<sub>2</sub>; 0.05% NaN<sub>3</sub>; 50% glycerol; pH 7.4

Other:

> 95% pure by SDS PAGE

*Duane E. Day*

Duane E. Day