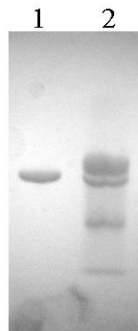


Molecular Innovations, Inc.

21315 Hilltop Street
Southfield, MI 48036
TEL: (248) 353-4927
FAX: (248) 353-4929
Web Site: <http://www.mol-innov.com>

Certificate of Analysis



10% SDS-PAGE - GelCode Blue Stain
1 GLYHPAI-L-304 (8 ug) Reduced
2 GLYHPAI-L-304 (8 ug) + uPA (20 ug) Reduced

Product: GLYHPAI-L – Human PAI-1 (Glycosylated Latent Wild Type)

Date: 24 March, 2004

Lot: GLYHPAI-L-304

Molecular Weight: 46,000 by SDS PAGE

Physical Specifications:

Physical Appearance: colorless frozen solution

Solubility: > 2 mg/mL and < 5 mg/mL

Spectrophotometric Data:

Ultraviolet: Absorbance (280nm) = 0.8 $\epsilon^{0.1\%} = 1.0$

Concentration = 0.8 mg/mL

Active Concentration < 0.2%

Considerations:

Storage Conditions: Store frozen at -70°C – stability > 1yr

Buffer Composition: 0.1 M HEPES; 0.1 M NaCl; 1 mM EDTA; pH 7.4

Other: > 98% pure by SDS PAGE

Duane E. Day

Duane E. Day